

**Beginning with Habitat (BwH)**  
equips Maine communities, landowners, and  
conservation partners with tools to protect, restore, and  
connect important habitats and ecosystems in a changing  
climate.  
[www.beginningwithhabitat.org](http://www.beginningwithhabitat.org)

## Habitat Connectivity

### Conserved Lands, Undeveloped Habitat Blocks & Habitat Connectors

## Whitefield

*This map is nonregulatory and is intended for planning purposes only*

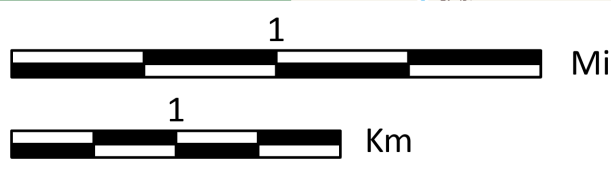


- Organized Towns
- Unorganized Towns
- Habitat Connectors\***
  - Likely Road Crossing Areas
  - Highway Bridges Potential Connectors
- Main Stream Habitat Viewer Crossings**
  - Barrier
  - Potential Barrier
  - No Barrier
- Habitat Blocks**
  - Acres
    - 0-500 Acres
    - 500 + Acres
- Focus Areas**
  - Focus Areas of Statewide Ecological Significance

*\*Represented habitat connections identified through computer modeling highlight locations where quality habitat is likely to occur on both sides of a given road between undeveloped habitat blocks greater than 100 acres and between higher value wetlands. These representations are approximate and have not been field verified.*

### Data Sources

- |  |  |
|--|--|
| TOWNSHIP BOUNDARIES                              | UNDEVELOPED HABITAT BLOCKS                       |
| ME Office of GIS (2021)                          | Beginning with Habitat (2020)                    |
| IMPERVIOUS                                       | FOCUS AREAS & HABITAT CONNECTORS                 |
| CCAP NOAA impervious land cover (2022)           | Beginning with Habitat (2023)                    |
| HYDROLOGY  | MAINE STREAM HABITAT VIEWER CROSSINGS            |
| US Geological Survey (2016)                      | ME Dept. of Inland Fisheries and Wildlife (2022) |
| CONSERVED LANDS                                  |  |
| ME Dept. of Ag., Cons., and For.,                |  |
| Land Use Planning Comm'n,                        |  |
| ME Dept. of Inland Fisheries and Wildlife (2024) |  |



Scale: 1:23,000  
Projection: UTM 19N  
Datum: NAD 1983

